

The Fly Leaf



Volume 71 No 2

Web Page: <http://www.ieffc.org>

February, 2026

Editors: Lee Funkhouser and Guy Gregory

**GENERAL MEETING
INLAND EMPIRE FLY FISHING CLUB
Spokane Airport Ramada Inn
February 10, 2026
Wet Fly Hour: 5:30 p.m.
Dinner: 6:30 p.m. Dinner cost \$35.00**

FEBRUARY PROGRAM Chip O'Brien

PRESIDENT'S MESSAGE By Bryan Harman

Welcome to February, love is in the air and spouses are at the meeting, translation the poacher is often most dangerous at this meeting. Our spouses seem to have a way of catching us doing things that are just a little dumber than normal or at least they seem to remember a little better than our fishing buddies. All February meeting attendees please take an extra minute (or more) to introduce your spouse to Hubert, and let your spouse know that Hubert is a collector of great and not so great fishing stories.

The January fishing trip to Rocky Ford was a success, I think almost everybody caught fish and it wasn't terribly cold. While there were a few muskrat holes found using our legs (seems to be the appropriate tool for the job) no one went swimming. If you have not done a club fishout in awhile, or at all, find one this year to attend. The fishing may not be great, but the conversation always is, and the food isn't too bad either. Any member that wants to go to a fishout but doesn't want to drive or can't drive, give me a call and we will get you a ride even if just to have lunch with the group.

I know it seems early to be discussing the Big Horn Show but we will be looking for volunteers, as it falls just a few days after the March meeting. Sign up for a time and get a free pass to the Big Horn Show, talk to some people about fly fishing and the club or tie some flies with kids. It is a fun time and great way for the club to reach out in the community for new members and guests.

DUES ARE DUE
Dues are due by March 1st. Please bring to the February meeting or send to our P.O. Box. \$50.00 for active members.

**IEFFC
P.O. Box 2926
Spokane, WA 99220**

We're going to give Silas a pass on being a bait fisherman because it was June 13, 1805 and he was fishing for food. North 40 Outfitters (House of Fly) had not yet arrived in what is today their headquarters in Great Falls, Montana, but the Lewis and Clark Expedition had.



Silas Goodrich was the angler on the Lewis and Clark Expedition and the first recorded non-Native to catch what we refer to as the Westslope cutthroat trout. Most Spokane fly anglers know that just across the border in Idaho are two of the world's best blue-ribbon Westslope cutthroat trout fisheries, the North Fork Coeur d'Alene River (NFCDL) and the St. Joe.

"Thank You, Silas Goodrich" goes way beyond what most anglers know about these two wonderful fisheries. Beyond everything you need to know to catch fish in either stream, this presentation also addresses some of the famous people who have loved these places over the centuries.

How the landscapes were formed, evolution of Westslope cutts, entomology, productive fly patterns and winning strategies are all addressed, with significant attention to the people who were there, living and dying along these beloved fisheries.

The purpose of this presentation is to both inform and entertain. Think of "Thank You, Silas Goodrich" as a love letter to our beloved Westslope cutthroat trout and our two favorite fisheries, the NFCDL and the St. Joe.

* * * * *

In 1964 a 10-year-old boy caught his first fish with his father's dusty old bamboo fly rod. From that moment on, Chip O'Brien knew he would spend his life fly fishing and sharing his adventures with others.

Educated as a writer/photographer and teacher, O'Brien has authored hundreds of articles in fly fishing magazines so far. His book, *River Journal, Sacramento River and California's Best Fly Fishing are available through Amazon.com and other sources.*

O'Brien guided the blue-ribbon trout streams in Northern California for 14 years and served as a Regional Manager for California Trout. He finished out his career (or so he thought) teaching high school kids the fine art of writing. Once retired, he fished all over the West for three years, and then one day found himself a bit bored. A Google search of "fly fishing jobs in Spokane" brought him to the North 40 Outfitters fly shop, first in Airway Heights and now in the new store in Mead.

"I never thought I'd find my dream job after retiring, but it seems I was born to work in a fly shop. Come check it out!"

Inland Empire Fly Fishing Club—Spokane, Washington

Floyd Wayne Holmes

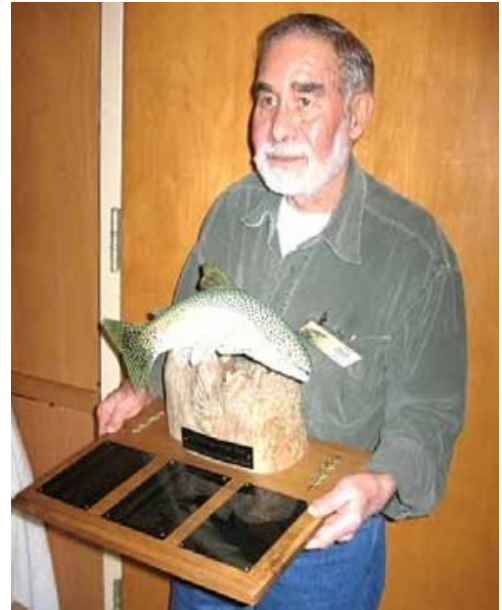
11/16/1938 to 1/11/2026

The Inland Empire Fly Fishing Club lost one of its very special members this past month. **Floyd Holmes** was a member of the IEFFC for over 40 years and he will be greatly missed.

Floyd passed away on January 11, 2026, surrounded by family after a short battle with lung cancer. He was 87 years old. He was born in Spokane, Washington, on November 16, 1938, to Wayne and Margaret Holmes. He graduated from John R. Rogers High School in 1957.

In October of 1961, he was drafted into the Army and served his country until being honorably discharged in September of 1967. He met Judy McLaughlin, and in 1965, they married; eventually having their two children.

Floyd's working years started at a very young age for his uncle, Mel, on Greenbluff at the Walker farm. Later, he was in the tire industry for many years and then in small engine and power tool repair. Many of us relied on Floyd's expertise to keep our boat motors running smoothly.



Floyd receiving the Hugh Evans Memorial Fly Fisherman of the Year Award



Floyd readying rods at Kid's Fishing

His happy place was the family cabin at Priest Lake. He was a member of Priest Lake Search and Rescue for many years.

Floyd was a very active member in the IEFFC and was the club's Sergeant at Arms for decades. He was a willing participant in many of the club's activities and was in charge of our Kid's fishing program for a number of years. He received the President's Award in 2019 for his work with Kid's Fishing and the Ronald McDonald House.

Floyd was given the club's highest honor, the Hugh Evans Memorial Fly Fisherman of the Year Award in 2012, for his outstanding and long term contributions to the IEFFC.

Floyd was a wonderful man, well liked by everyone and a valuable member of the IEFFC. He will be fondly remembered by the IEFFC and the entire fly fishing community.



Floyd and other IEFFC members at fin clipping

Inland Empire Fly Fishing Club—Spokane, Washington

Valentine's Meeting By Phil Beck

Well it's that time of year again! IEFFC's Valentines Meeting where we include enablers of all persuasion's- spouses, girlfriends, boyfriends, Or whoever asks or tells you to go fishing. And of course it's Very Important to remind all unaccompanied members to be sure to come also!!!

Besides our "suitable for fishers and non fishers alike" presentation we're also doing our fundraising, or at the very least break even, Valentines Day Raffle with items Only to the ladies along with items available to everyone. Pink bags for the girls Red raffle tickets and of course Blue bags for the gentlemen's Blue tickets, along with the option for Red tickets. Remember we are trying to honor our enablers who will mainly have appropriately Red tickets.

Tickets are \$1 each or 20 for Only \$20, and of course this discount rate applies equally even larger numbers of tickets. We operate on a cash basis so don't leave home without an adequate supply. Sounds like an American Express ad. We will accept checks.

Now for a list of known raffle items as of Jan. 28th:

North 40 gift certificate, two hats donated by North 40 Mead 'The Fly Box', an insulated stainless lowball Bourbon on the rocks glass donated by Phil Beck- to be accompanied by 'test shots' of bourbon. Also a top end nipper with lanyard. Another gift certificate and more from Silver Bow.

From Cost Plus World Market: two draws of a B Valentine themed tea cup with tea and via coffee, blown glass ornament, 2 sets of soap with two scented candles, a Scented soap with a shower bomb, a 4 pack of men's soaps, and an Old Goat scented soap with a fish mug.

Stephen and Patti A. Are donating two gifts; one Coffee Themed and one Purse or Backpack Themed.

Also wine and additional items still to be chosen! And, if like past years, more donations from our generous members.

Phil says "I plan to donate a box of chironomids if I can find time to tie them".

Also there may be a hold over Bitterroot Nets turquoise stream fly box available! A high value item for sure.

Watch for the RSVP request and we'll see you at the Spokane Airport Ramada on February 10th.



Inland Empire Fly Fishing Club—Spokane, Washington

CONSERVATION COMMITTEE 2026

By Jerry McBride

The IEFFC board of directors has approved the 2026 budget for Conservation.

Here are the details.

Grants

- Lands Council –\$150. The mission of the Lands Council is to preserve and revitalize Inland Northwest forests, water, and wildlife through advocacy, education, effective action, and community engagement. Their efforts directly affect the quality of fishing that we enjoy. Past and present efforts include the drainages of the North Fork of the Coeur d’Alene and the St. Joe, both of which many of our members fish.
- Friends of the Little Pend Oreille –\$150. Friends of the LPO advocate for the Little Pend Oreille Wildlife Refuge. Most of their efforts have been directed at trails and wildlife. By contributing, our club can have a seat at the table and hopefully get some effort directed towards enhancing the fishing opportunities on the LPO.
- Spokane River Keeper –\$150. The Spokane River Keeper advocates for the Spokane River. Their efforts on behalf of the Spokane River directly affect the quality of the fishery in the Spokane River.
- Friends of the River Coalition (FORC) -\$300. FORC Mission Statement: We are a small nonprofit established in 2020 to work on growth issues on the North Fork of the Coeur d’Alene River. We are cleaning up the river corridor from dangerous debris and trash. Working to create an infrastructure to contain trash, offer parking, drift boat, canoe, kayak and floating launches, as well as restrooms, etc. Along with Agency support and Enforcement. Ultimately, we want to see Fees Established for a Day, Week, or Season Pass. That way we can ensure the future is brighter for all of us who love this river. Please join us. FORC does more for fly fishing than any of the other groups we give grants to, so I suggest we give them more money.

Projects

- Rebuild Amber Lake Launch Ramp-joint project with the SFF - \$500
- Fin Clipping at WDFW Spokane Hatchery – no cost to IEFFC.
- Bayley Lake Spawning Channel Cleanup and Gravel Renewal. \$250 for breakfast for 10 volunteers.

Total Grants and Projects-----\$1500

Additional Projects for the year will be funded based on the direction of the 2026 Board.

Inland Empire Fly Fishing Club—Spokane, Washington

AMBER LAKE PROPOSAL

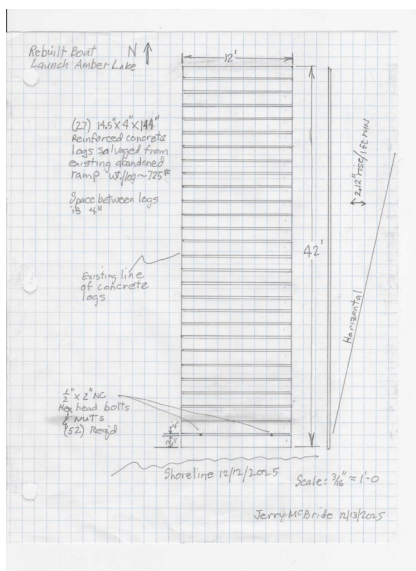
By Jerry McBride

A number of years ago the concrete planked boat launch was blocked off after several vehicles backed off into the lake. The planked ramp was blocked off with large boulders and a graveled ramp was built that angles off the East side of the original ramp into shallower water. This ramp has served well for many years. However, there is a problem with vehicles digging holes in the gravel when they pull up the ramp. The gravel has been renewed and compacted as a joint project by the Inland Empire Fly Fishing Club (IEFFC) and the Spokane Fly Fishers (SFF) in 2021 and again in 2025. The gravel just renewed in April 2025 is already well dug up.

It is proposed that the graveled ramp be covered with concrete planks salvaged from the old ramp which would solve the dug-up gravel problem. Measurements have been taken and a drawing prepared of the proposed ramp rebuild. It is estimated that 27 concrete planks would be required and there are that many that can be salvaged from the lakeside of the boulders blocking access to the ramp. The estimated weight of each plank is 725 pounds so a machine will be required to lift and place them in their new location. The planks are bolted together so the bolts would have to be removed to lift and place the individual planks. New bolts would be installed to connect the planks to each other as they are placed.

Here are the steps that will be taken:

1. Dan Diezkan, WDFW Region 1 Facilities Manager, will get appropriate permits.
2. Once permits have been granted Dan and his seasonal employee Adam Grant will cut the bolts and salvage the concrete planks. They will be staged on site. A WDFW machine will be used to move the concrete planks. If any additional planks are required, they will be supplied by WDFW from their storage site.
3. Dan and Adam will grade the area where the planks will be placed with their WDFW machine. The grading level will be set so the top of the planks will be level with the existing planks and pavement.
4. The planks will be placed and bolted together by Dan and Adam. WDFW will supply the new bolts required. The planks will be placed starting above the water line.
5. A 12 yard load of $\frac{3}{4}$ " minus crushed rock will be ordered for delivery onsite once the planks are in place. The crushed rock will be paid for by the IEFFC and SFF.
6. With oversight by Dan Dziekan the IEFFC and SFF volunteers will spread the crushed rock to fill in between the planks. The crushed rock will be then compacted with a plate compactor supplied by the IEFFC and SFF. Any crushed rock left over will be distributed around the site as directed by Dan Dziekan. The volunteers will also rehab the site raking gravel and trimming vegetation as required.
7. A schedule has not been determined for the project, but it is projected that preliminary work by Dan and Adam will be done before June and the plank placement will take place in the fall.
8. The IEFFC and SFF will share the expenses equally and will supply an equal number of volunteers for the project. Jerry and Jim will request that their respective clubs budget \$500 for their share of the project. The number of volunteers required will be determined later.
9. **Jerry McBride** will coordinate the project with Dan Dziekan of WDFW and Jim Athearn of SFF.

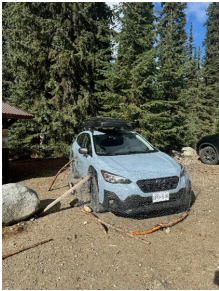


Inland Empire Fly Fishing Club—Spokane, Washington

DID YOU KNOW

By Jerry McBride

We have two Good Samaritans in our club. In October 2024 **Stephenie and Rob Stephens** were on a hiking trip in the Kokanee Glacier Provincial Park in British Columbia. They were driving up a steep forest road heading to a trail head. The mountain side sloped down steeply off the driver's side. Stephenie and Rob spotted a bright red object about 15' down the hillside so they stopped to check it out. Turns out it was a kayak. They thought possibly whoever lost the kayak would backtrack to find it, so they left it and drove on up to the trail head.



They found an interesting thing at the trail head. There were about 15 vehicles parked, of which about five had chicken wire strung around them. When they asked what that was about, they were told that porcupines chew on rubber brake hoses causing the vehicle to lose its brakes. Fortunately, Rob and Stephenie didn't have their brake hoses chewed on while they were on their hike.

On their way back down the mountain they found the kayak was still there, and decided to load it up in their truck. Rob slid down the hillside and tied a rope onto the kayak and Stephenie pulled it up to the road. The kayak had two phone numbers written on it. When they got into cell phone coverage they called the first number. The person who answered said they had sold the kayak, but could put them in contact with the new owner. The new owner's phone number was the second number on the kayak, so they called him.



The owner, Patrick Murphy, lives on the other side of Kootenay Lake in Crawford Bay so he would have to take the ferry over to Balfour to pick up his kayak. He asked Rob and Stephenie to leave the kayak at the local bakery and he came over on the ferry the next day and picked it up.

Patrick was very happy to get his kayak back. He had driven down the mountain in a hurry to catch the ferry in Balfour and didn't even notice that the kayak was gone until he got on the ferry. At that point he had pretty much given up ever getting it back.

He offered to host Stephenie and Rob at his small farm in Crawford Bay. Patrick distills his own whiskey so they would have the opportunity to sample it while visiting. He also offered to take Rob to Whitetail Lake on a fly fishing trip. So far, they have been too busy to take up Patrick on his offer.

All-in-all it was an adventure for Stephenie and Rob with a happy ending. They are truly Good Samaritans.

Inland Empire Fly Fishing Club—Spokane, Washington

UPCOMING PROGRAMS

By Phil Beck

MARCH PROGRAM:

Our presentation for March will be by Joe Rotter from Reds Fly Shop. The presentation will be designed around fishing on Washington's Blue Ribbon trout Stream, the Yakima River. A wonderful fishery that is not really much farther than the North Fork of the Coeur D'Alene or the St Joe.

APRIL PROGRAM:

CHANGE IS IN THE AIR! This year our Traditional April Program with Presentations from our in house Hydrologist **Guy Gregory**, and the valuable current prognosis and updates provided by WA Regional Fisheries Biologist Randy Osborne & ID Regional Fisheries Biologist Andy Dux will now be presented either by March or April Fly Leaf Article's or emailed directly to our members. I have invited both Randy and Andy to join us as dinner guests for our April meeting. At this time Randy plans to attend and Andy would like to, but isn't sure he can. They both expressed their enjoyment of socializing with our members.

So THEN WHAT!!

April we will have a Presentation by Greg Mathews called 'Chasing Giants'. It is a program on his hunt for giant fish of various species and in a wide variety of places.

Greg is an accomplished fly fisherman, guide and author from Montana. Greg will bring along some of his books for sale and is generously donating one for a club raffle. He will also have Prints of Paintings by his highly acclaimed Father and is also donating Two of those for IEFFC raffle use .

But back to our biologist friends; as we have done for the last couple of years, we will be offering the membership the opportunity to send specific questions for either Randy or Andy to the Fly Leaf Editors, where they will be collected and sent to the appropriate person. The cut off will be Thursday March 12th. Both biologists will then try to have answers for preparing their write ups.

JANUARY MEETING PRESENTATIONS

At the January meeting new President **Bryan Harman** presented 2025 President **Guy Gregory** with a custom made net, complete with a caricature of Guy's famous dog, Dugan. Guy's contribution to the club has been immense and his efforts as President are truly appreciated.



Also at the January meeting, membership chair **Bob Schmitt** was able to present new IEFFC member **JC Hicks** with his membership packet. Welcome to the club JC!!



Inland Empire Fly Fishing Club—Spokane, Washington

BIGHORN SHOW March 19-22

It's time to start thinking about the Big Horn Show in March. We have a booth again and will be looking for volunteers to tie flies and talk with people interested in fly fishing.

Bryan will be addressing this at the February meeting, and we will be sending out information regarding the schedule in the next few weeks. If you are interested in helping, don't hesitate to reach out to Bryan or send an email to the flyleaf email address.

Flyleaf.ieffc@gmail.com



IEFFC 2026 CALENDAR

Date	Event	Location	Contact/Time
February 3	Fly Tying Night—North Spokane	Fieldhouse Pizza	Phil Beck
February 10	IEFFC Meeting/Valentines Dinner	Spokane Airport Ramada	Bryan Harman
February 12	IEFFC Board Meeting	Spokane Valley Library	Bryan Harman
February 14-15	The Fly Fishing Show	Bellevue, WA	
February 17	Fly Tying Night—Spokane Valley	YAYA Brewery	Lee Funkhouser
March 3	Fly Tying Night—North Spokane	Fieldhouse Pizza	Phil Beck
March 10	IEFFC Meeting	Spokane Airport Ramada	Bryan Harman
March 12	IEFFC Board Meeting	Spokane Valley Library	Bryan Harman
March 17	Fly Tying Night-Spokane Valley	YAYA Brewery	Lee Funkhouser
March 19-22	Big Horn Show	Spokane Fair and Expo Center	Denny Carson
April 14	IEFFC Meeting	Spokane Airport Ramada	Bryan Harman
April 16	IEFFC Board Meeting	Spokane Valley Library	Bryan Harman

Inland Empire Fly Fishing Club—Spokane, Washington

FEBRUARY PROGRAM By Phil Beck

In February, our Special Valentines meeting will feature Chip O'Brien, another author and long time guide, who has a special presentation which will be of interest to our members and to their "enablers". Chip has put together a program on the Coeur d'Alene River; both its fishery and its history, with photography, history, fishing and maybe a few 'unusual characters from times past. Chip presented at a previous Valentines Special meeting and our special guests were very fond of his colorful style of speaking.



Join us for a fun Valentines gathering and REMEMBER you do not have to bring a spouse, girlfriend, or any other 'enabler' TO ATTEND! Hope to see you all there.

FLY TYING NIGHTS Continuing Into The Spring

Fly tying nights continue to be well attended so we are continuing them in February and March. Some really amazing flies are being tied and some really amazing stories are being told.

We will continue using YAYA Brewery and Fieldhouse Pizza and they are always glad to see us.

Winter is a great time to learn some new patterns and fill your fly box with flies for next years fishing season.

Fly tying will be the first Tuesday of the month at Fieldhouse Pizza and the third Tuesday of the month at YAYA. Fieldhouse Pizza is located at 4423 W. Wellesley Ave, across the street from Veterans Hospital. YAYA is located at 11712 East Montgomery Drive in the Spokane Valley, and we tie from 6PM to 7:30PM. They have food service at both locations and the beer is cold. Guests are welcome and we look forward to seeing you.



Inland Empire Fly Fishing Club—Spokane, Washington

ROCKY FORD OUTING By Lee Funkhouser

The Rocky Ford outing again was a huge success. One of the club's favorite outings did not disappoint as it supplied good food, good conversation and big fish..

The fishing was not spectacular, but IEFFC members landed some big ones and a number of fish were powerful enough to snap lines. The weather was perfect for winter fishing and the food provided by IEFFC President **Bryan Harman** was excellent. There were a few missteps leading to muddy legs, but nobody took to the water this year.

The outing was well attended with members **Guy Gregory, Jeff Pope, Jerry McBride, Larry Ray, Bryan Harman, Jerome Brotherton, Shawn Denny, Shawn's friend Tim, Pat Stuart, Jake Nelson and Lee Funkhouser** in attendance.



Lunch provided by Bryan Harman



Good food and good conversation



Bryan Harman hiding in the reeds



Jeff Pope staying dry

FLY OF THE MONTH CONTRIBUTIONS

For over 60 years, the Fly of the Month has been a major part of our newsletter. Hundreds of patterns have been chosen to be our Fly of the Month and most of those flies were introduced by club members. We do look outside our club for patterns that members can tie and utilize in our waters, but our preference will always be member contributions.

If you have a special fly that you would like featured, we welcome your input. Here are a few things that will allow us to feature your fly.

1. Name your fly. 2. Provide a list of materials. 3. Provide a step by step description of the tying process. 4. Provide approximately five pictures taken during the tying process. 4. Provide a brief description of the fly, (how it came about, how to fish it, etc.) 5. Provide a picture of the completed fly.

We look forward to seeing your favorite pattern in an upcoming edition of *The Fly Leaf*..

Inland Empire Fly Fishing Club—Spokane, Washington

FLY OF THE MONTH

Stuart's Streamer

February 2026

Pat Stuart

Pat's fly is a pattern he has used in many area lakes. He fishes it deep and uses a special strip retrieve that starts with a slow pull and ends with a quick snap. The area fish react to this fly with aggressive takes and it can be deadly when the fish are active. Pat ties it in numerous color variations, but the two shown today are the most successful colors he uses at Medical Lake. He believes it closely matches some of the small fish that are present in Medical Lake.

Pat says the key for success with this fly is to get the fly on the bottom of the lake where the bigger fish are hanging out. It is a fly designed to catch big fish and I have witnessed Pat's success in that pursuit.

Easy to tie and fun to fish. Certainly worth a try.

Hook: Spey Fly Size 10, 1.5 inch standard.
Thread: Green, Your Choice.
Body: Green Holographic Tinsel.
Wing/Body: Streamer Goat Hair in green.
Wing/Body: Marabou, 3" Craftfur. (with or in place of Goat Hair).
Wing/Body: Guinea Dot Feather in Green.
Wing/Body: Hairline Half Grizzly Saddle in Chartreuse and/or Yellow.
Eyes: 3/16" gold eye secured with fletch tite.
Collar: Collar material can be your choice of color.



Start by wrapping the hook with a small thread base. Then tie in the Green Holographic Tinsel and wrap the hook to form a slender body.

Next you will tie in some Streamer Goat Hair to add to the body shape. (Pat sometimes uses Marabou in place of the Goat Hair or a combination of both).

Now you will tie in the Guinea Dot Feathers to continue adding bulk to the fly.

The next feather to tie is the Hairline Half Grizzly in Chartreuse. Tie in a number of feathers. The more that you add, the more attractive the fly becomes to the fish. You can also tie in a combination of colors.

Making the head is a process of creating a cone collar with collar material of your choice. Now add the eyes using the Fletch Tite Glue material. Once that is done, you can whip finish your thread, cut the thread, and add some head cement to the cone.

Pat gave me both green and yellow flies, so there is a picture of each here.



2025 IEFFC OFFICERS

Your IEFFC Officers for 2026

Bryan Harman	President
Shawn Denny	Vice President
Charlene Douglas	Treasurer
Larry Ray	Secretary
Matt Mason	Board Member
Stephenie Stephens	Board Member
Jeff Pope	Board Member

MEMBER RIDE SERVICE By Bob Schmitt

If the ravages of time and age have forced you to curtail your driving, we have the answer for you.

If you need a ride to one our monthly meetings simply call **Bob Schmitt at (509) 466-1934**. A ride will be arranged for you. You will be picked up at your residence, taken to the Club meeting and returned home. It's as simple as making a phone call.

JOINING FFI

There is no better time to consider joining FFI than now. It's easy and you will be joining a number of IEFFC members already involved in the organization.

To Join FFI simply go to the website listed:

<http://www.flyfishersinternational.org/>

Click Membership, Click join then the blue round button.

Join the FFI today



Fly Fishers International
Conserve, Restore and Educate Through Fly Fishing

The Inland Empire Fly Fishing Club
FFI Charter Member and McKenzie Plaque Winner
The WSCIFFF through your support can continue our mission to *conserve* and *restore* our resources, and *educate* fly fishers in our sport and grow advocacy for fish and fisheries.

Submissions for publication in the Fly Leaf can be made by contacting the FlyLeaf Editor at flyleaf.ieffc@gmail.com. Articles should be submitted by the last Friday of the month for inclusion in the following months newsletter.